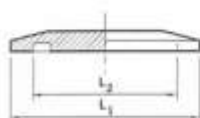
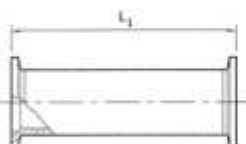


size	L <sub>1</sub>	L <sub>2</sub>	L <sub>3</sub>	D	part numbers
<b>Reducing T-Piece - Stainless steel</b>					
NW25/16	100	27.4			KS-25-040
NW40/16	130	33.5			KS-40-040
NW40/25	130	65			KS-40-041
NW50/16	140	40			KS-50-040
NW50/25	140	65			KS-50-041



<b>Blank Flange - Aluminum</b>					
NW10	30	12.2			KA-10-026
NW16	30	17.2			KA-16-026
NW25	40	26.2			KA-25-026
NW40	55	41.2			KA-40-026
<b>- Stainless steel</b>					
NW10	30	12.2			KS-10-026
NW16	30	17.2			KS-16-026
NW25	40	26.2			KS-25-026
NW40	55	41.2			KS-40-026
NW50	75	52.2			KS-50-026

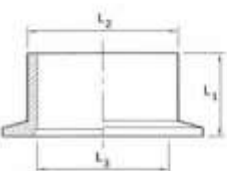


<b>Full Nipple - Aluminum</b>					
NW10	60				KA-10-028
NW16	80				KA-16-028
NW25	100				KA-25-028
NW40	130				KA-40-028
<b>- Stainless steel</b>					
NW10	60				KS-10-028
NW16	80				KS-16-028
NW25	100				KS-25-028
NW40	130				KS-40-028
NW50	140				KS-50-028



For inch tube: D<sub>n</sub> tube OD

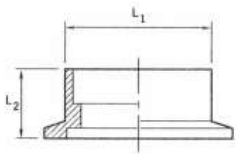
<b>Long Flange Weld Stub - Stainless steel</b>					
NW10	70	15	10		KS-10-025
NW16	70	20	16		KS-16-025
NW25	70	28	24		KS-25-025
NW40	70	44.5	41		KS-40-025
NW50	70	57	51		KS-50-025
<b>- For inch tube</b>					
NW10	40	12.7	9.3	1/2	KS-10-006
NW16	40	19.1	15.7	3/4	KS-16-007
NW25	40	25.4	22	1	KS-25-008
NW40	40	38.1	34.7	1 1/2	KS-40-009
NW50	40	50.8	47.4	2	KS-50-010



For inch tube: D<sub>n</sub> tube OD

<b>Short Flange Weld Stub - Stainless steel</b>					
NW10	30	15	10		KS-10-024
NW16	30	20	16		KS-16-024
NW25	30	28	24		KS-25-024
NW40	30	44.5	41		KS-40-024
NW50	30	57	51		KS-50-024
<b>- For inch tube</b>					
NW10	12.7	12.7	9.3	1/2	KS-10-001
NW16	12.7	19.1	15.7	3/4	KS-16-002
NW25	12.7	25.4	22	1	KS-25-003
NW40	19.1	38.1	34.7	1 1/2	KS-40-004
NW50	19.1	50.8	47.4	2	KS-50-005

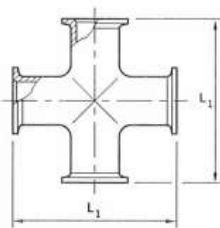
size	L <sub>1</sub>	L <sub>2</sub>	L <sub>3</sub>	D	part numbers
------	----------------	----------------	----------------	---	--------------



L<sub>3</sub> = tube OD, mm / D = tube OD, inches

#### Weld Socket Flange For Inch Tube - Stainless steel

NW16	15.5	12.7	12.7	1/2	KS-16-011
NW16	22.1	12.7	19.1	3/4	KS-16-012
NW25	28.6	12.7	25.4	1	KS-25-013
NW40	44.5	12.7	38.1	1 1/2	KS-40-014
NW50	57.2	15.7	50.8	2	KS-50-015

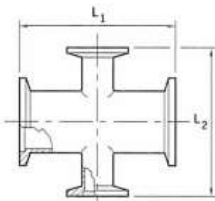


#### Cross Piece - Aluminum

NW10	60				KA-10-031
NW16	80				KA-16-031
NW25	100				KA-25-031
NW40	130				KA-40-031

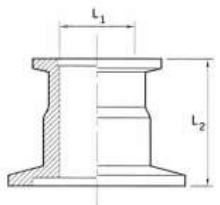
#### - Stainless steel

NW10	60				KS-10-031
NW16	80				KS-16-031
NW25	100				KS-25-031
NW40	130				KS-40-031
NW50	140				KS-50-031



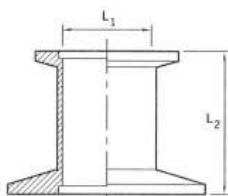
#### Reducing Cross - Stainless steel

NW25/10	70	70			KS-25-049
NW25/16	100	80			KS-25-047
NW40/16	130	80			KS-40-047
NW40/25	130	100			KS-40-048
NW50/25	140	100			KS-50-048



#### Reducing Piece - Aluminum

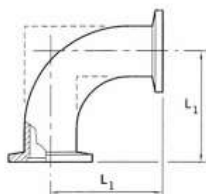
NW25/10	10	40			KA-25-042
NW25/16	10	40			KA-25-043
NW40/25	24	40			KA-40-044
NW40/16	16	40			KA-40-043
NW50/16	16	40			KA-50-043
NW50/25	24	40			KA-50-044
NW50/40	41	40			KA-50-045



#### Reducing Piece - Stainless steel

NW25/10	10	40			KS-25-042
NW25/16	16	40			KS-25-043
NW40/25	16	40			KS-40-044
NW40/16	24	40			KS-40-043
NW50/16	16	40			KS-50-043
NW50/25	24	40			KS-50-044
NW50/40	40	40			KS-50-045

size	L <sub>1</sub>	L <sub>2</sub>	L <sub>3</sub>	D	part numbers
------	----------------	----------------	----------------	---	--------------

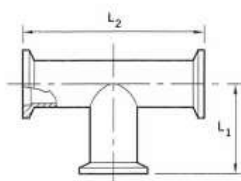


**Elbow 90° - Aluminum**

NW10	30				KA-10-029
NW16	40				KA-16-029
NW25	50				KA-25-029
NW40	65				KA-40-029

**- Stainless steel**

NW10	30				KS-10-029
NW16	40				KS-16-029
NW25	50				KS-25-029
NW40	65				KS-40-029
NW50	80.5				KS-50-029

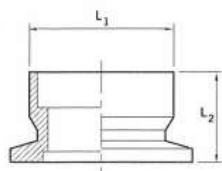


**T-Piece - Aluminum**

NW10	30	60			KA-10-030
NW16	40	80			KA-16-030
NW25	50	100			KA-25-030
NW40	65	130			KA-40-030

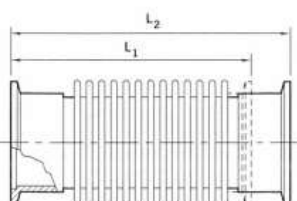
**- Stainless steel**

NW10	30	60			KS-10-030
NW16	40	80			KS-16-030
NW25	50	100			KS-25-030
NW40	65	130			KS-40-030
NW50	70	140			KS-50-030



**Coupling Body - Brass**

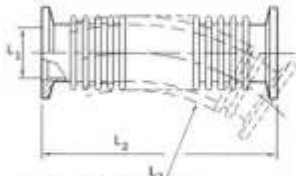
NW10	18	13			C105-11-328
NW25	32	20			C105-14-328
NW40	46	18			C105-16-628



**Flexible Bellows - Stainless steel**

NW10	65	85			KS-10-046
NW16	65	85			KS-16-046
NW25	65	85			KS-25-046
NW40	65	85			KS-40-046
NW50	80	100			KS-50-046

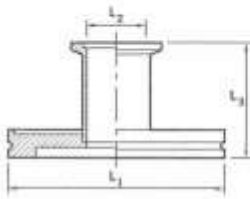
size	L <sub>1</sub>	L <sub>2</sub>	L <sub>3</sub>	D	part numbers
------	----------------	----------------	----------------	---	--------------



L<sub>2</sub> = minimum bend radius, static  
D = minimum bend radius, dynamic

#### Flexible Pipelines - Stainless steel

NW10	12.2	250	30	100	KS-10-021
NW16	17.2	250	30	130	KS-16-021
NW25	26.2	250	50	210	KS-25-021
NW40	41.2	250	80	260	KS-40-021
NW50	52.2	250	100	320	KS-50-021
NW10	12.2	500	30	100	KS-10-022
NW16	17.2	500	30	130	KS-16-022
NW25	26.2	500	50	210	KS-25-022
NW40	41.2	500	80	260	KS-40-022
NW50	52.2	500	100	320	KS-50-022
NW10	12.2	1000	30	100	KS-10-023
NW16	17.2	1000	30	130	KS-16-023
NW25	26.2	1000	50	210	KS-25-023
NW40	41.2	1000	80	260	KS-40-023
NW50	52.2	1000	100	320	KS-50-023



#### Adaptor NW/ISO - Stainless steel

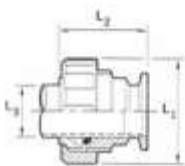
NW25/ISO63	95	25	50		IS-63-044
NW40/ISO63	95	40	50		IS-63-045
NW40/ISO100	130	40	50		IS-10-045
NW50/ISO100	130	50	50		IS-10-055



D = hose internal diameter

#### Adaptor PVC Hose - Stainless steel

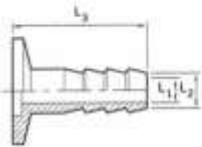
NW10/1/2 in hose	12.7	32		12.7	KS-10-016
NW16/1/2 in hose	12.7	32		12.7	KS-16-016
NW16/3/4 in hose	19.1	32		19.1	KS-16-017
NW25/1 in hose	25.4	38.1		25.4	KS-25-018
NW40/1 1/2 in hose	38.1	50		38.1	KS-40-019
NW50/2 in hose	47.4	55		50.8	KS-50-020



#### Compression Fitting - Aluminum

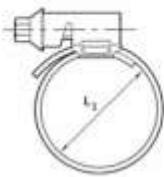
NW10	44	43	14/15		C105-20-050
------	----	----	-------	--	-------------

size	L <sub>1</sub>	L <sub>2</sub>	L <sub>3</sub>	D	part numbers
------	----------------	----------------	----------------	---	--------------



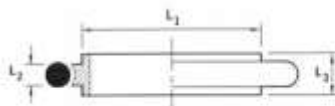
**Nozzle - Aluminum**

NW10	7	12	40		KA-10-032
NW25	7	12	40		KA-25-032
NW40	7	12	40		KA-40-032



**PVC Hose Clamp - Stainless steel**

NW10/16	25				KS-10-039
NW25	36				KS-25-039
NW40	50				KS-40-039
NW50	60				KS-50-039



**Centering Ring With 'O' Ring - Fluoroelastomer/stainless steel carrier**

NW10	12	3.9	8		KS-10-127
NW16	17	3.9	8		KS-16-127
NW25	26	3.9	8		KS-25-127
NW40	41	3.9	8		KS-40-127
NW50	52	3.9	8		KS-50-127

**- Fluoroelastomer/aluminum carrier**

NW10	12	3.9	8		KA-10-127
NW16	17	3.9	8		KA-16-127
NW25	26	3.9	8		KA-25-127
NW40	41	3.9	8		KA-40-127

**- Nitrile/stainless steel carrier**

NW10	12	3.9	8		KS-10-227
NW16	17	3.9	8		KS-16-227
NW25	26	3.9	8		KS-25-227
NW40	41	3.9	8		KS-40-227
NW50	52	3.9	8		KS-50-227

**- Nitrile/aluminum carrier**

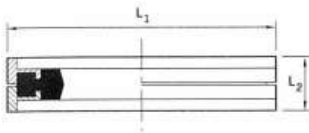
NW10	12	3.9	8		KA-10-227
NW16	17	3.9	8		KA-16-227
NW25	26	3.9	8		KA-25-227
NW40	41	3.9	8		KA-40-227



**Centering Ring With Screen - Fluoroelastomer/stainless steel**

NW16	16	3.9	8		KS-16-133
NW25	25	3.9	8		KS-25-133
NW40	40	3.9	8		KS-40-133
NW50	50	3.9	8		KS-50-133

size	L <sub>1</sub>	L <sub>2</sub>	L <sub>3</sub>	D	part numbers
------	----------------	----------------	----------------	---	--------------

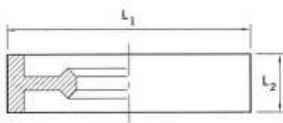


**Co-Seal - Nitrile/aluminum carrier**

NW10/16	36	7			B271-58-480
NW20/25	42	7			B271-58-490
NW32/40	57	7			B271-58-500

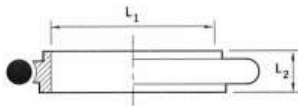
**- Fluoroelastomer/aluminum carrier**

NW10/16	32	7			B271-58-481
NW20/25	42	7			B271-58-491
NW32/40	57	7			B271-58-501



**Metal Seals - Aluminum**

NW10/16	32	7			C271-59-004
NW20/25	42	7			C271-59-005
NW32/40	57	7			C271-59-006
NW50	77	7			C271-59-007

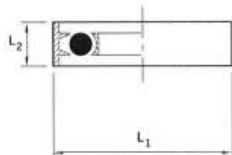


**Adapting Centering Ring With 'O' Ring - Nitrile**

NW10/16 stainless steel	10	8			KS-10-234
-------------------------	----	---	--	--	-----------

**- Fluoroelastomer**

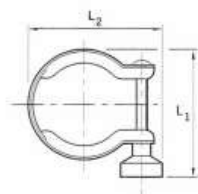
NW10/16 stainless steel	10	8			KS-10-134
-------------------------	----	---	--	--	-----------



**NW Trapped 'O' Ring - Fluoroelastomer/stainless steel/aluminum**

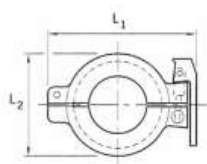
NW10/16	32.5	7			KA-10-138
NW25	42.5	7			KA-25-138
NW40	57.5	7			KA-40-138
NW50	77.5	7			KA-50-138

size	L <sub>1</sub>	L <sub>2</sub>	L <sub>3</sub>	D	part numbers
------	----------------	----------------	----------------	---	--------------



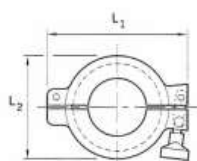
#### Clamping Ring - Stainless steel

NW10/16	44	46			C105-12-401
NW20/25	60	60			C105-14-401
NW32/40	73	75			C105-16-401
NW50	90	96			C105-17-401



#### Hinged Clamp - Aluminum

NW10/16	68	40			C105-12-402
NW20/25	80	50			C105-14-402
NW32/40	95	66			C105-16-402



#### Swing Clamp - Aluminum

NW10/16	62	40			KA-10-036
NW20/25	75	50			KA-25-036
NW32/40	90	66			KA-40-036
NW50	120	86			KA-50-036