

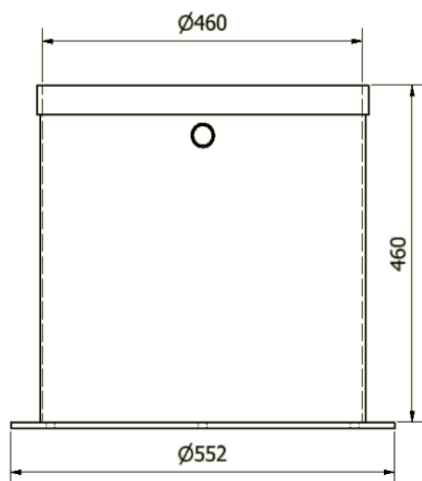
DP76 and DP76 Kits,

Technical Data Sheet

System Overview

The AVE DP76 – High Vac is our 76 litre, high vacuum degassing solution. It features a stainless-steel degassing chamber, an aluminium lid, borosilicate glass viewport and front facing KF25 vacuum manifold. An additional KF16 auxiliary port is located on the rear.

Our DP chambers are compliant with ASTM D3078- 02 and ISO 20484 testing standards, they are pressure tested to 5×10^{-4} mbar and helium leak tested.



Options/Extras

- AVE lid mounted stirrer (0-133 or 0-200 RPM)
- 0 – 180°C heater platform
- Electrical vacuum feedthroughs
- Additional KF or BSPP ports
- IRV20 vacuum regulator (max flow 240L/min)
- Traceable or UCAS gauge calibration

High Vacuum Degassing Pot Range

MODEL	VOLUME (L)	Ø x h (mm)	VACUUM PUMP
DP9 – HV	9	206 x 270	RV206
DP27 – HV	27	311 x 356	RV206
DP42 – HV	42	373 x 381	RV212
DP76 – HV	76	460 x 460	RV224
DP118 – HV	118	500 x 600	RV224
DP250 - HV	250	600 x 900	RV224



Specifications

- Internal Dimensions: 460mm Ø x 460mm H
- Capacity - 76 Litres
- Weight - Approximately 57kg
- Material – 304 Stainless Steel
- Sealing Face – Viton L gasket
- Aluminium Lid
- Borosilicate Glass View Port
- AVE 63mm glycerine filled indication gauge.
- Vacuum isolation valve and air admittance ball valve with pneumatic silencer

Vacuum Pump

- KJLC RV224
- Operating Frequency - 50 / 60 (HZ)
- Pumping Speed - 21.6 / 26 m^3/hr
- Max Water Vapour Pumping Rate – 300 g/hr
- Ultimate Partial Pressure – 4×10^{-4} mbar
- Cooling Method – Convection
- Inlet Flange – KF25
- Weight – 37kg

Custom design Service

All chambers may be customised to meet specific requirements through our custom design service. Bespoke options may include personalised dimensions, additional inlet ports and electrical vacuum feedthroughs.

For our full range of customisations and AVE vacuum feedthroughs, speak to a member of our design team today!